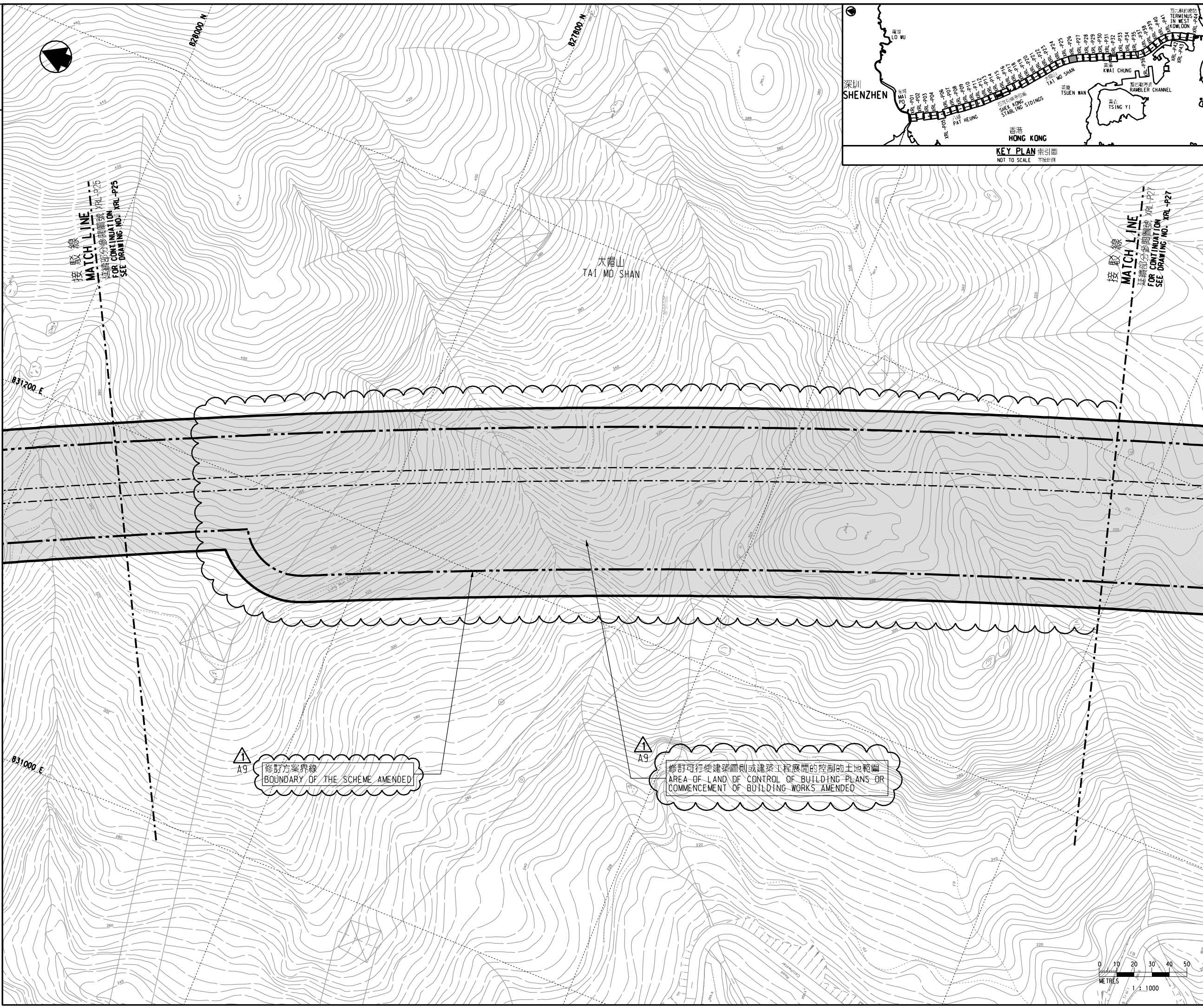
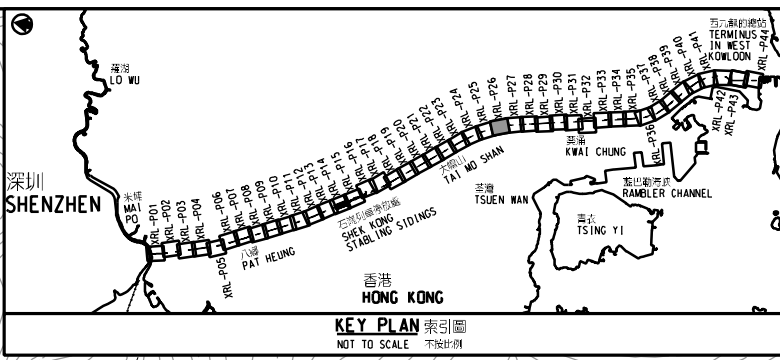


DRAWING NO. XRL - P26



- 圖例 LEGEND**
- 方案界線  
BOUNDARY OF THE SCHEME
  - 擬建的軌道中線  
PROPOSED RAILWAY TRACK CENTRE LINE
  - 擬建的鐵路車站  
PROPOSED RAILWAY STATION
  - 就建築工程（包括在方案界線以外進行的建築工程）與方案或鐵路的營運或維修不相容，可行使建築圖則或建築工程展開的控制的土地範圍  
AREA OF LAND ON WHICH CONTROL OF BUILDING PLANS OR COMMENCEMENT OF BUILDING WORKS (INCLUDING BUILDING WORKS OUTSIDE THE BOUNDARIES OF THE SCHEME) WHICH ARE INCOMPATIBLE WITH THE SCHEME OR THE OPERATION OR MAINTENANCE OF THE RAILWAY MAY BE REQUIRED
  - 圖則修改  
DRAWING REVISION
  - A1 修訂參考編號（參考憲報公告）  
AMENDMENT REFERENCE NUMBER (SEE GAZETTE NOTICE)
  - 修訂範圍  
AMENDMENT AREA



修訂表  
TABLE OF AMENDMENTS

修訂 REV	日期 DATE	繪圖 BY	核對 SUB	批准 APP	修訂項目 AMENDMENT ITEM	說明 DESCRIPTION
1	17 APR 2009	CADD	DW	PP	修訂項目 A9 AMENDMENT ITEM A9	

獲准發出  
APPROVED FOR ISSUE

路政署  
鐵路拓展處處長(2)  
GOVERNMENT ENGINEER/  
RAILWAY DEVELOPMENT (2)  
HIGHWAYS DEPARTMENT

圖則名稱  
DRAWING TITLE

廣深港高速鐵路香港段  
鐵路條例(第519章)  
控制建築圖則及工程展開圖則  
44頁的第26頁  
HONG KONG SECTION OF  
GUANGZHOU - SHENZHEN - HONG KONG  
EXPRESS RAIL LINK  
RAILWAYS ORDINANCE (CHAPTER 519)  
CONTROL OF BUILDING PLANS AND  
COMMENCEMENT OF WORK PLAN SHEET 26 OF 44

圖號  
DRAWING NO.

**XRL - P26**

比例  
SCALE

**1:1000 (A1)**  
或如顯示  
OR  
AS SHOWN

香港特別行政區政府  
THE GOVERNMENT OF THE HONG KONG  
SPECIAL ADMINISTRATIVE REGION

路政署  
HIGHWAYS DEPARTMENT

鐵路拓展處  
RAILWAY DEVELOPMENT OFFICE

